



# TOD'S

WOMEN'S  
COLLECTION

FALL WINTER  
2023/2024



WOMEN'S COLLECTION  
FALL WINTER 2023/2024

READY TO WEAR  
PP 3 - 20

SHOES  
PP 21 - 29

BAGS  
PP 30 - 41

EYEWEAR  
PP 42 - 43

TOD'S



WOMEN'S COLLECTION  
FALL WINTER 2023/2024

READY TO WEAR

TOD'S



READY TO WEAR



TOD'S



LOOK 1



READY TO WEAR



TOD'S



LOOK 2



READY TO WEAR

TOD'S

LOOK 5



READY TO WEAR

TOD'S

LOOK 6



READY TO WEAR

TOD'S

LOOK 7





READY TO WEAR



TOD'S



LOOK 9



READY TO WEAR

TOD'S

LOOK 12



READY TO WEAR

TOD'S

LOOK 13



READY TO WEAR

TOD'S

LOOK 15



READY TO WEAR

TOD'S

LOOK 18



READY TO WEAR



TOD'S



LOOK 25



READY TO WEAR



TOD'S



LOOK 30



READY TO WEAR

TOD'S

LOOK 31

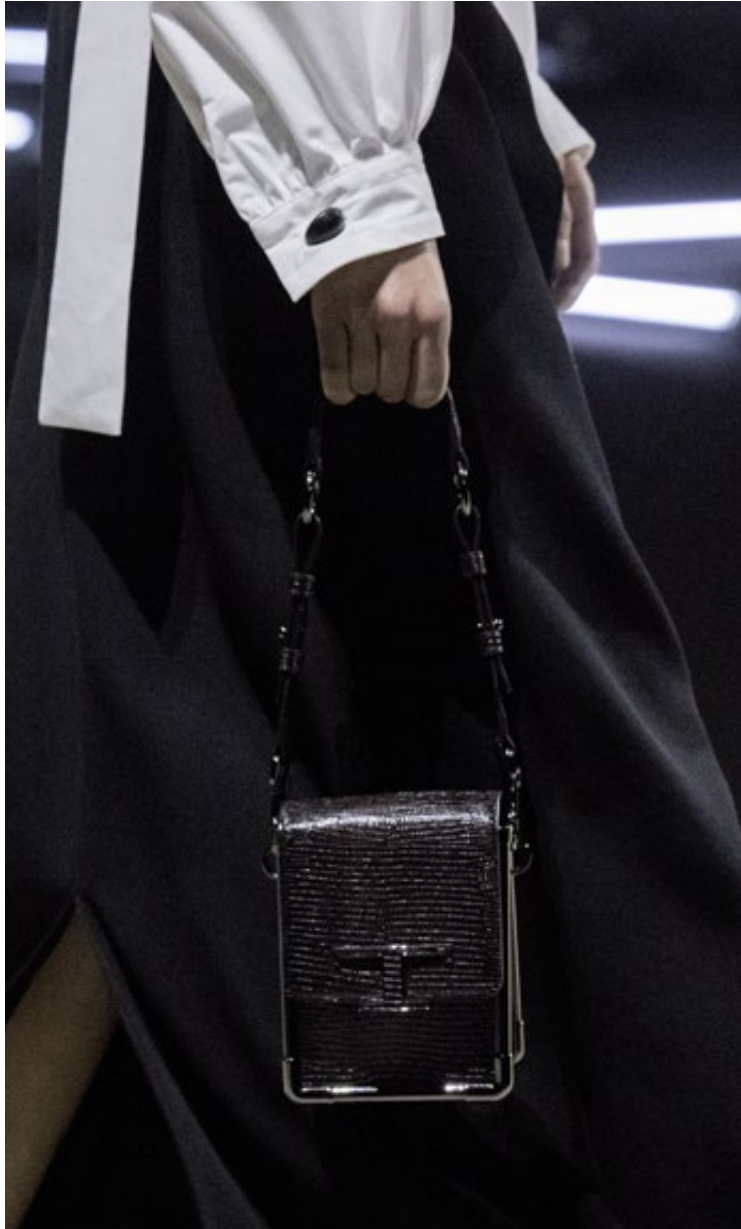




READY TO WEAR

TOD'S

LOOK 35



READY TO WEAR

TOD'S

LOOK 37



READY TO WEAR



TOD'S



LOOK 41



READY TO WEAR



TOD'S



LOOK 42



WOMEN'S COLLECTION  
FALL WINTER 2023/2024

SHOES

TOD'S



OI - A



OI - B



OI - C

TOD'S BUBBLE BALLERINA

TOD'S



O2 - A

TOD'S BUBBLE BALLERINA

TOD'S



O3 - A



O3 - B





O4 - A



O4 - B



O4 - C

T TIMELESS PUMP

TOD'S



O5 - A



O5 - B

T TIMELESS PUMP

TOD'S



06 - A



06 - B



O7 - A

T TIMELESS

TOD'S



08 - A

LOAFER

TOD'S



WOMEN'S COLLECTION  
FALL WINTER 2023/2024

BAGS

TOD'S



09 - A



09 - B

TOD'S DI BAG

TOD'S



10 - A



10 - B

TOD'S DI BAG

TOD'S





II - A



II - B



12 - A



12 - B

TOD'S T CASE

TOD'S



TOD'S T CASE

TOD'S



13 - A



13 - B



14 - A



14 - B

TOD'S T CASE

TOD'S



15 - A



15 - B

TOD'S T CASE

TOD'S



16 - A

TOD'S T TIMELESS

TOD'S



17 - A



17 - B



17 - C



17 - D

TOD'S T TIMELESS

TOD'S



18 - A



18 - B

TOD'S T TIMELESS

TOD'S





19 - A



19 - B



19 - C

TOD'S T TIMELESS BELT

TOD'S



WOMEN'S COLLECTION  
FALL WINTER 2023/2024

EYEWEAR

TOD'S



20 - A

EYEWEAR

TOD'S



## PRESS OFFICE

### ADDRESSES

ITALY / CORPORATE  
CORSO VENEZIA, 30 - 20121 MILANO  
TEL. +39 02 772251

FRANCE / BENELUX  
22, RUE DU GÉNÉRAL FOY - 75008 PARIS  
TEL. +33 1 55352055

UNITED KINGDOM  
THE PROW | WILDER WALK - 4<sup>TH</sup> FLOOR - LONDON W1B 5AP  
TEL. +44 207 4990155

SPAIN  
AREA COMUNICACION GLOBAL- SEBASTIAN HERRERA, 10- 28012 MADRID  
TEL. +34915313162

PORTUGAL  
AREA COMMUNICATION GLOBAL - TRAVESSA DA FÁBRICA DAS SEDAS 1,  
1250 - 025, LISBOA, PORTUGAL  
TEL. +351 927 202 324

UAE  
VOICE - ASPECT TOWER 9<sup>TH</sup> FLOOR OFFICE 903 BUSINESS BAY  
PO BOX 282892 DUBAI UAE  
TEL. +97 1 44321195

USA / LATIN AND CENTRAL AMERICA  
555 MADISON AVENUE - 20<sup>TH</sup> FLOOR - NEW YORK, NY 10022  
TEL. +1 212-751-1066

333 NORTH RODEO DRIVE - BEVERLY HILLS, CA 90210 LOS ANGELES  
TEL. +1 310 2850064

CHINA  
UNIT1, 45F, WHEELLOCK SQUARE, No.1717 NANJING ROAD WEST, JING AN DISTRICT,  
SHANGHAI, 200040 PRC  
TEL. +86 21 6032 7812

HONG KONG & MACAO  
35/F, THE LEE GARDENS, 33 HYSAN AVENUE, CAUSEWAY BAY - HONG KONG  
TEL. +852 2810 9080

SOUTH EAST ASIA  
M213 HENDERSON ROAD, #04-11, SINGAPORE 159553  
TEL. 65 6462 0030

JAPAN  
JINGUMAE TOWER BLDG. 9F - 1-5-8 JINGUMAE - SHIBUYA-KU - TOKYO 150-0001  
TEL. +81 3 6625 8708

KOREA  
11F PAX TOWER, 231-13 NONHYEON-DONG, GANGNAM-GU, SEOUL 135-830  
TEL. +82 2 3448 8131

PUBLICATIONS FROM OTHER COUNTRIES SHOULD CONTACT THE MILAN PRESS OFFICE

The image shows a dark, atmospheric interior space, possibly a museum or gallery. In the center, there is a tall, narrow wooden tower structure with several rectangular openings. The floor is dark and covered with numerous small, glowing rectangular lights arranged in a grid-like pattern. A large, bright light source is visible in the background, creating a strong glow and casting long shadows. The walls are dark and textured, with some visible architectural details. The overall mood is mysterious and dramatic.

TOD'S