

# TOD'S



WOMEN'S  
COLLECTION

SPRING SUMMER  
2023



WOMEN'S COLLECTION  
SPRING SUMMER 2023

READY TO WEAR  
PP 4 - 17

SHOES  
PP 19 - 26

BAGS  
PP 28 - 35

EYEWEAR  
PP 37 - 38

TOD'S



WOMEN'S COLLECTION  
SPRING SUMMER 2023

READY TO WEAR

TOD'S



READY TO WEAR

TOD'S

LOOK 1



READY TO WEAR



TOD'S



LOOK 2



READY TO WEAR



TOD'S



LOOK 4



READY TO WEAR



TOD'S



LOOK 11



READY TO WEAR

TOD'S

LOOK 15





READY TO WEAR

TOD'S

LOOK 18



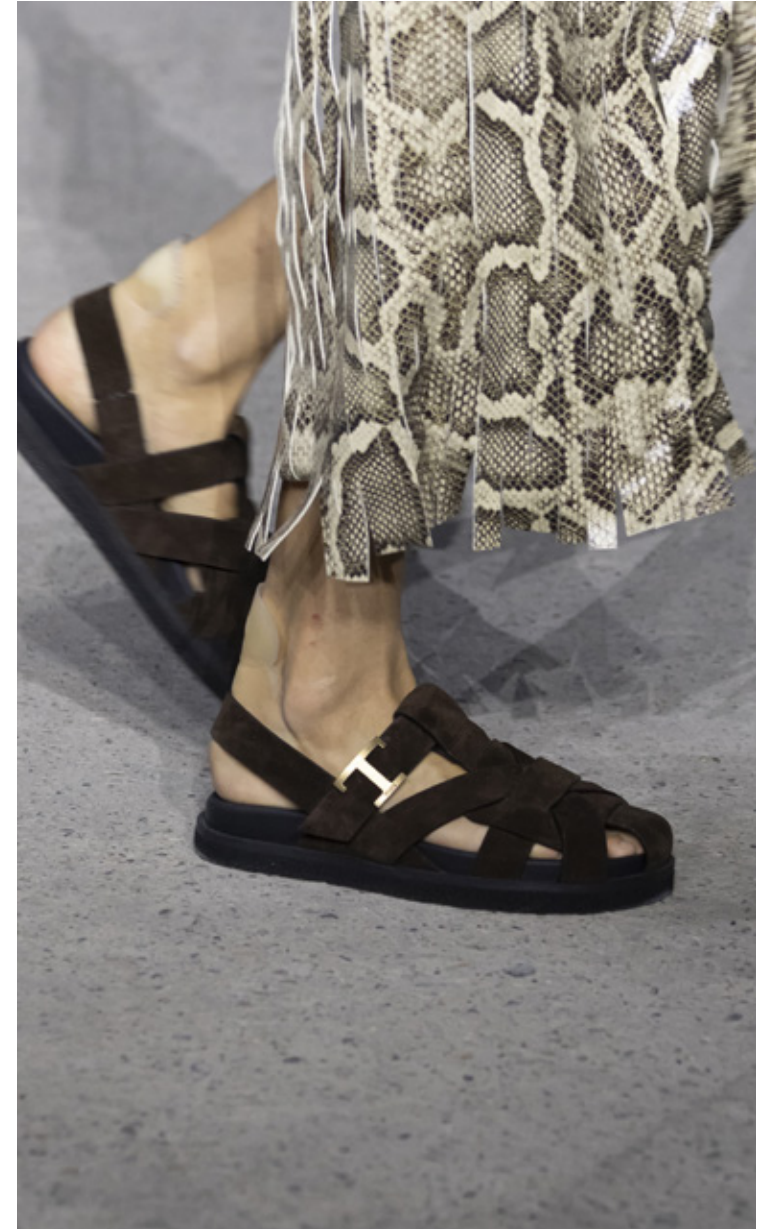
READY TO WEAR



TOD'S



LOOK 22



READY TO WEAR

TOD'S

LOOK 24



READY TO WEAR

TOD'S

LOOK 31



READY TO WEAR

TOD'S

LOOK 33



READY TO WEAR



TOD'S



LOOK 35



READY TO WEAR

TOD'S

LOOK 37



READY TO WEAR

TOD'S

LOOK 40





READY TO WEAR

TOD'S

LOOK 46



WOMEN'S COLLECTION  
SPRING SUMMER 2023

SHOES

TOD'S



TOD'S BUBBLE BALLERINA

TOD'S



OI - A



OI - B



OI - C



O2 - A



O2 - B



O2 - C

TOD'S BUBBLE BALLERINA

TOD'S



O3 - A



O3 - B



O3 - C

TOD'S BUBBLE GOMMINO

TOD'S



O4 - A



O4 - B



O5 - A



O5 - B



O5 - C

TOD'S T-TIMELESS LOAFERS

TOD'S



06 - A



06 - B



06 - C

SANDALS

TOD'S





MULES

TOD'S



O7 - A



O7 - B



O7 - C



TOD'S 1T

TOD'S



O8 - A



O8 - B



O8 - C



WOMEN'S COLLECTION  
SPRING SUMMER 2023

BAGS

TOD'S



TOD'S DI BAG

TOD'S



09 - A



09 - B



09 - C



10 - A



10 - B

TOD'S DI BAG

TOD'S



II - A



II - B

TOD'S T TIMELESS

TOD'S



12 - A



12 - B



12 - C

TOD'S T TIMELESS

TOD'S



13 - A



13 - B





14 - A



14 - B



14 - C

TOD'S T TIMELESS

TOD'S



15 - A



15 - B



WOMEN'S COLLECTION  
SPRING SUMMER 2023

EYEWEAR

TOD'S



16 - A



16 - B



17- A



17 - B



17 - C



## PRESS OFFICE

### ADDRESSES

ITALY / CORPORATE  
CORSO VENEZIA, 30 - 20121 MILANO  
TEL. +39 02 772251

FRANCE / BENELUX  
22, RUE DU GÉNÉRAL FOY - 75008 PARIS  
TEL. +33 1 55352055

UNITED KINGDOM  
THE PROW | WILDER WALK - 4<sup>TH</sup> FLOOR - LONDON W1B 5AP  
TEL. +44 207 4990155

SPAIN  
AREA COMUNICACION GLOBAL- SEBASTIAN HERRERA, 10- 28012 MADRID  
TEL. +34915313162

PORTUGAL  
AREA COMMUNICATION GLOBAL - TRAVESSA DA FÁBRICA DAS SEDAS 1,  
1250 - 025, LISBOA, PORTUGAL  
TEL. +351 927 202 324

UAE  
VOICE - ASPECT TOWER 9<sup>TH</sup> FLOOR OFFICE 903 BUSINESS BAY  
PO BOX 282892 DUBAI UAE  
TEL. +97 1 44321195

USA / LATIN AND CENTRAL AMERICA  
555 MADISON AVENUE - 20TH FLOOR - NEW YORK, NY 10022  
TEL. +1 212-751-1066

333 NORTH RODEO DRIVE - BEVERLY HILLS, CA 90210 LOS ANGELES  
TEL. +1 310 2850064

CHINA  
UNIT1, 45F, WHEELLOCK SQUARE, No.1717 NANJING ROAD WEST, JING AN DISTRICT,  
SHANGHAI, 200040 PRC  
TEL. +86 21 6032 7812

JAPAN  
JINGUMAE TOWER BLDG. 9F - 1-5-8 JINGUMAE - SHIBUYA-KU - TOKYO 150-0001  
TEL. +81 3 6625 8708

KOREA  
11F PAX TOWER, 231-13 NONHYEON-DONG, GANGNAM-GU, SEOUL 135-830  
TEL. +82 2 3448 8131

ASIA PACIFIC  
35/F, THE LEE GARDENS, 33 HYSAN AVENUE, CAUSEWAY BAY - HONG KONG  
TEL. +852 2810 9080

PUBLICATIONS FROM OTHER COUNTRIES SHOULD CONTACT THE MILAN PRESS OFFICE



TOD'S